

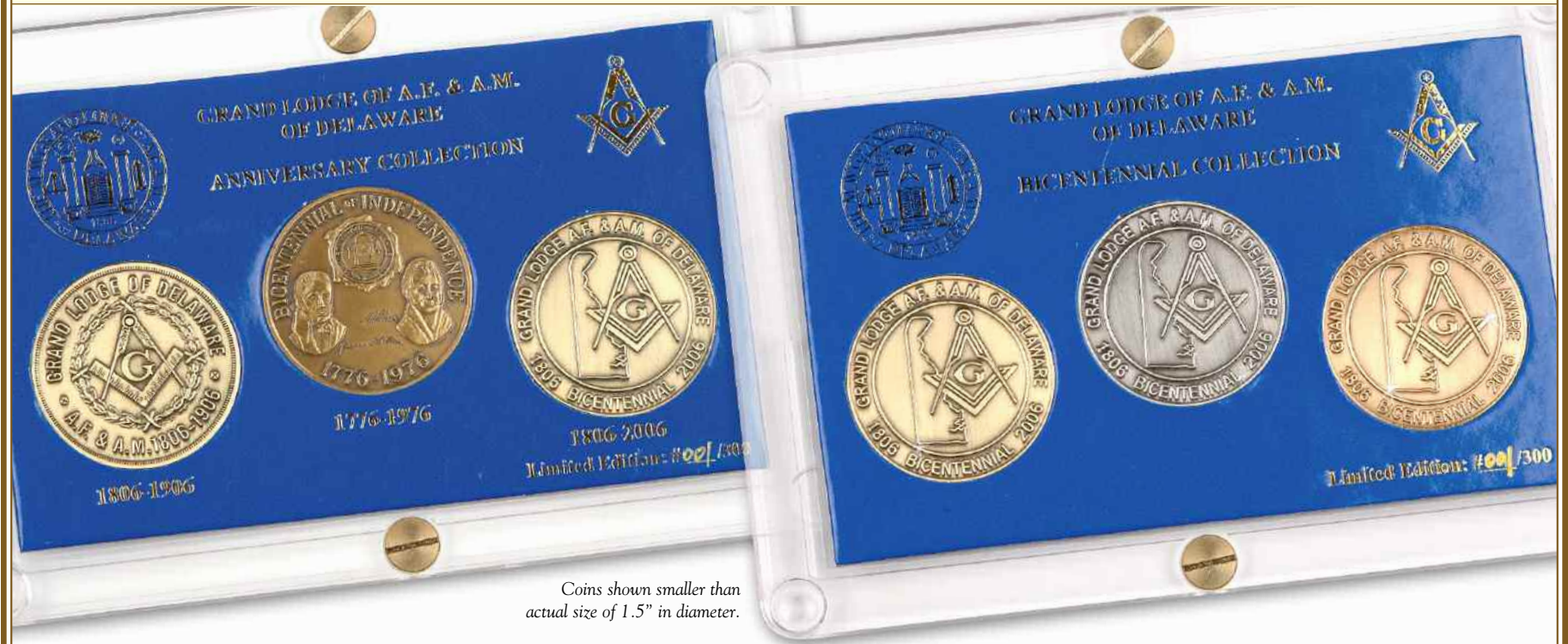


Own Your Piece of Delaware Masonic History



THE OFFICIAL GRAND LODGE OF DELAWARE ANNIVERSARY AND BICENTENNIAL COIN COLLECTIONS

Issued in Strictly Limited Editions of Just 300 Serially Numbered Sets Each



Coins shown smaller than actual size of 1.5" in diameter.

ANNIVERSARY COIN COLLECTION

Centennial - Bicentennial of Independence - Bicentennial

Each Coin Minted and Finished in Antiqued Bronze

A numbered limited edition of 300 sets

Issue Price: \$49.95 + \$7.95 Shipping/Handling

BICENTENNIAL COIN COLLECTION

Three Bicentennial Coins

Minted and Finished in Antiqued Bronze, Silver and Gold

A numbered limited edition of 300 sets

Issue Price: \$49.95 + \$7.95 Shipping/Handling

BUY BOTH SETS WITH MATCHING SERIAL NUMBERS

For just \$89.95 + \$7.95 Shipping/Handling (SAVE \$17.90)

We proudly present two exclusive Delaware Masonic Coin collections to mark the 200th Anniversary of Freemasonry in Delaware.

These collections are being issued in very limited editions to assure their importance and historical significance. They represent the Pride, Dedication, Determination and Devotion we give in support of our great fraternity.



Reverse of Bicentennial Coin shown actual size.

The proceeds will benefit the Grand Lodge which helps guarantee that you, your sons, grandsons, great grandsons and other men of good character, will have Freemasonry as a legacy in their lifetimes.

Order today to receive the lowest serial numbers which are most treasured by knowledgeable collectors. Don't miss out on this once-in-a-lifetime collecting opportunity.



ORDER FORM

Mail to: Grand Lodge of A.F.&A.M. of Delaware
818 Market Street, Wilmington, DE 19801-3077

- YES.** I wish to order the following Official Coin Sets (Limit ONE EACH)
 - Both sets with matching serial numbers: \$97.90* (I save \$17.90)
 - The Anniversary Collection: \$57.90*
 - The Bicentennial Set: \$57.90*

* Includes \$7.95 for shipping and handling

Due to the limited number, I understand that I may only order ONE of each collection.

Enclosed is my check/money order for \$_____ payable to "Grand Lodge A.F.&A.M. of Delaware."

SHIPPING ADDRESS:

Name: _____

Address: _____

City: _____ State: _____ Zip: _____

Phone: (____) _____ (In case we have questions about your order)

Signature: _____

